



# APRIL NEWSLETTER



## WHERE YOU CAN FIND US

Mailing and Physical address  
429 E First Street  
Big Piney, WY 83113  
(307) 276-3249  
Fax: (307) 276-3044

## HOURS

8:00 A.M. - 4:00 P.M.  
Monday - Thursday  
8:00 A.M. - 12:00 P.M.  
Friday  
Meals served  
Tuesday, Wednesday, and Thursday doors  
open at 8:00 A.M And lunch is served at  
11:30 A.M

## MEAL COST

\$ 6.00 Senior  
\$ 9.00 Senior guest  
\$ 13.00 Community



## CARIE'S COMMENTS

March was such a fun and busy month at the center, and we're excited for everything April has in store—including our 5th Annual Pie Auction!

We are also beginning preparations for our upcoming Foundation23 fundraiser, which is a matching funds event. Thanks to the incredible generosity of our donors, the past three years have been a great success, and we look forward to sharing more details with you in the coming months.

Looking ahead to May, we're thrilled to host a festive Kentucky Derby party for all our seniors to enjoy! Be sure to check this newsletter for information about our Derby Hat-making events happening in April so you can join in the fun.

Behind the scenes, our team has been hard at work planning engaging activities, creating menus you'll love, and managing budgets and grants to keep everything running smoothly. Hats off to our fantastic, hardworking, and big-hearted staff and board members who make it all possible! April is volunteer recognition month, we have some GREAT ones, be sure and thank them!

A quick reminder: if you'd like to take leftovers home, please bring your own small container, as we are currently out. Also, we've had several new seniors join our community—when you see them, please help us give them a warm welcome.

Thank you all for making this center such a wonderful place. Come share your smile!- Carie

## BOARD MEMBERS

Bill Lehr  
Karen Taylor  
Janet Beiermann  
Dianne Davison  
Jean Golden  
Ann Barney  
Betty Simpson

## STAFF

Carie James/ Director  
Heather Griffin/ Bookkeeper  
Darcy Simpson/ Social  
Director  
Ellen Mullikin/ Dishwasher  
Nancy Aceves/ Chef  
Jessie Mitchell/ Chef  
Mary Fugle/ Driver

## VOLUNTEERS

Brenda Hatcher  
Allison Thrash  
Dianne Davison  
Sherri Redden  
Debbie Despain  
Ray and Gloria Willoughby  
Deanne Bradley



# April 2026



## Menu

MON	TUE	WED	THU	FRI
Monday Morning Social Coffee & Pastry 8 A.M		<sup>1</sup> <b>BLT Sandwich Fries Cucumber Salad  Banana Pudding</b>	<sup>2</sup> <b>Easter Dinner Ham Scalloped Potatoes Green Beans Lemon Blueberry cake</b>	<sup>3</sup> Senior Breakfast 8-9
<sup>6</sup> Monday Morning Social Coffee & Pastry 8 A.M	<sup>7</sup> <b>French Onion Pot Roast Mashed Potatoes Peas  Ice Cream</b>	<sup>8</sup> <b>Stuffed Shells Italian Blend Veggies Garlic Bread  Cream Puff Cake</b>	<sup>9</sup> <b>Grilled Chicken Roasted Veggies Rice Pilaf  Strawberry Shortcake</b>	<sup>10</sup> Senior Breakfast 8-9 Sourdough Pancakes
<sup>13</sup> Monday Morning Social Coffee & Pastry 8 A.M Pot Luck 12:00	<sup>14</sup> <b>Chili Corn Bread  Ice Cream Peach Cobbler</b>	<sup>15</sup> <b>Loaded Potatoes Steak Bites Bread  Blondies</b>	<sup>16</sup> <b>Pulled Pork Potato Salad Cole Slaw  Coconut Cake</b>	<sup>17</sup> Senior Breakfast 8-9
<sup>20</sup> Monday Morning Social Coffee & Pastry 8 A.M	<sup>21</sup> <b>Chicken Pot Pie Asparagus  Ice Cream</b>	<sup>22</sup> <b>Beef Potato Skillet Roll  Donuts</b>	<sup>23</sup> <b>Pizza Italian Salad  Cannoli</b>	<sup>24</sup> Senior Breakfast 8-9
<sup>27</sup> Monday Morning Social Coffee & Pastry 8 A.M	<sup>28</sup> <b>Pork Roast Potatoes Carrots Roll  Ice Cream</b>	<sup>29</sup> <b>Country Fried Steak Mashed Potatoes Peas Birthday Cake BOJH Free Lunch</b>	<sup>30</sup> <b>Creamy Italian Chicken Zucchini Garlic Bread  Rice Pudding</b>	Menu is subject to change with out notice

## Loan Closet

We offer a complimentary loan closet at the senior center for individuals in need of mobility aids such as crutches, walkers, bath chairs, wheelchairs, and similar equipment for a limited duration. If you require any of these items, please feel free to check them out. You are welcome to borrow the equipment and return it once it is no longer needed.

## Need a ride?



We are a WYDOT Seniors/ public demand response transportation service.

Please call for a ride/bus fares and for more information  
48 hour notice is appreciated

WSIL- Transportation call Jessica for an appointment  
(307) 362-4159

Emergency Phone number  
(307) 260-5441

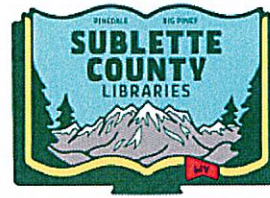
## On Going

Monday morning social 8 A.M.  
Coffee and pastry  
Tuesday - Public health nurse  
Friday - Continental breakfast 8-9 A.M.



**Blood Pressure**  
Second  
Tuesday of  
every month  
Courtesy of  
public health

**Mobile Library**  
11:00-12:45  
March 15th and  
29th



**Curbside Pick up**  
If you wish to order lunch, please call between 9:00 and 9:30 to ensure that your order is prepared on time.

# SWSCP SENIOR CENTER



## Donations

Calvin Thompson  
Wendy Gaston

## Memorial Donations

## Food Bank

Available to seniors Only  
April 14<sup>th</sup>, 15<sup>th</sup>, 16<sup>th</sup>

## Community Food Bank

Second Tuesday every month  
5 P.M -6:30 P.M  
111 Rakestraw Marbleton Wy

**Wyoming Senior  
medicare Patol  
(Smp)**

*Sandy Goodman, SMP*  
Program manager  
106 West Adams  
PO Box BD  
Riverton Wy, 82501  
(307)856-6880

## Meetings

**4/1 senior center Board meeting  
after lunch**  
Senior Housing board meeting is  
the second Wednesday of each  
month



# April 2026

## Activities

Sign up please



SUN	MON	TUE	WED	THU	FRI	SAT
Solo Painting In Activities Room On Mondays			1 <b>Toe Nail Cutting 9:00 A.M</b> Wii Bowling 10:00 & 12:30  Board Meeting 12:30	2 <b>Exercise 10 A.M</b>  <b>Pie Auction 12:30</b>	3 <b>Senior Breakfast 8-9</b>	4
5	6 <b>Coffee &amp; Pastry 8 A.M</b>  <b>blood draw</b>	7 <b>blood draw</b> Cribbage 10:30 Blood Pressure Clinic Mexican Train Dominos 12:30	8 <b>Wii Bowling 10:00 &amp; 12:30</b>	9 <b>Golden Hour W/ Proactive 9:30-10:30</b>  <b>Spring Wreath Making 12:30</b>	10 <b>Senior Breakfast 8-9</b>  <b>Sourdough Pancakes</b>	11
12	13 <b>Coffee &amp; Pastry 8 A.M</b>  <b>Pot Luck 12:00</b>	14 <b>Exercise 10 A.M</b> Cribbage 10:30	15 <b>Wii Bowling 10:00</b>  <b>Bingo 12:30</b>  Mobile Library 11:30	16 <b>Golden Hour W/ Proactive 9:30-10:30</b>  <b>Auxiliary Meeting 12:30</b>	17 <b>Senior Breakfast 8-9</b>	18
19	20 <b>Coffee &amp; Pastry 8 A.M</b>  <b>Evanston Horse Palace Gateway Leave @ 8:30</b>	21 <b>Exercise 10 A.M</b> Cribbage 10:30  <b>Book Club 12:30</b>	22 <b>Wii Bowling 10:00</b>  <b>Kentucky Derby Hats 12:30</b>	23 <b>Pool Tournament 9 A.M</b> Golden Hour W/ Proactive 9:30-10:30 <b>Movie 12:30</b>  SWSCP Volunteer Recognition  PFAC Event Leave @ 4	24 <b>Senior Breakfast 8-9</b>	25
26	27 <b>Coffee &amp; Pastry 8 A.M</b>	28 <b>Exercise 10 A.M</b> Cribbage 10:30	29 <b>Mobile Library 11:30</b>  <b>JR. Class Games 10:00</b>  <b>BOJH FREE LUNCH</b>	30 <b>Golden Hour W/ Proactive 9:30-10:30</b>		



April

# BIRTHDAYS

## HAPPY BIRTHDAY

- 2<sup>ND</sup> CYNDE GUIO
- 2<sup>ND</sup> BARBARA HARPER
- 2<sup>ND</sup> GERI CAMERON
- 3<sup>RD</sup> JUDY BRADY
- 4<sup>TH</sup> FRANCES ROBINSON
- 5<sup>TH</sup> HELEN MEEKS
- 5<sup>TH</sup> KAREN MOORE
- 5<sup>TH</sup> STEVE HOFELER
- 7<sup>TH</sup> KATHY ALLEN
- 7<sup>TH</sup> BARBARA MEEKS
- 9<sup>TH</sup> GREGORY ALLEN
- 9<sup>TH</sup> TAMMY EVANS
- 9<sup>TH</sup> DEBORAH JESS
- 10<sup>TH</sup> EARL PRESTON
- 14<sup>TH</sup> BARBARA BAIN
- 16<sup>TH</sup> BONNIE NELSON
- 17<sup>TH</sup> ZOEL BLACKMON
- 19<sup>TH</sup> JERRY ANN CHANDLER
- 21<sup>ST</sup> SHIRLENE MADISON
- 22<sup>ND</sup> LESLEY WENZ
- 22<sup>ND</sup> CYNTHIA KAUTZSCH
- 24<sup>TH</sup> JENNIFER REES
- 28<sup>TH</sup> SHELBY DYESS
- 28<sup>TH</sup> MICHAEL OLSEN
- 29<sup>TH</sup> DIANNE DAVISON

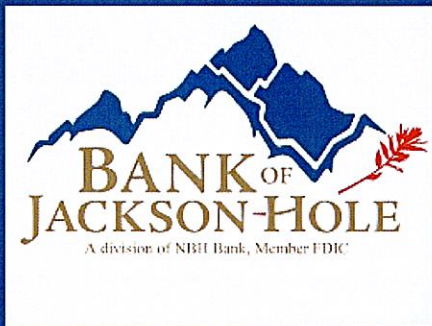
### COMPLIMENTS OF SWSC PIONEERS

IF YOUR BIRTHDAY FALLS IN THE  
CURRENT MONTH  
FILL OUT YOUR NAME AND GIVE TO  
FRONT DESK ATTENDENT.

NAME: \_\_\_\_\_

## Free Lunch Day.

April 29<sup>th</sup>

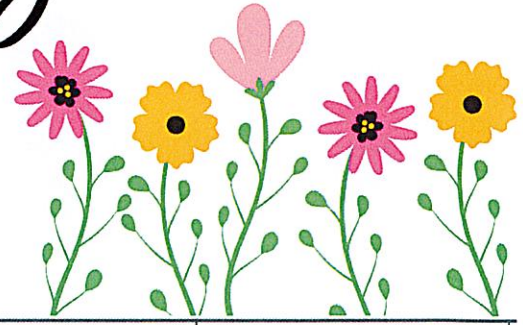
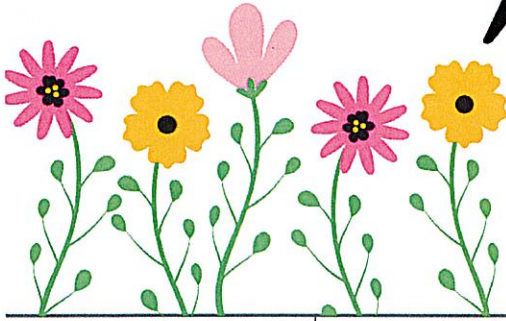


## Website

VIEW THE NEWSLETTER IN COLOR ONLINE OR PAY FOR LUNCH  
TICKETS @  
[WWW.PIONEERSENIORCENTER.COM](http://WWW.PIONEERSENIORCENTER.COM)

TO SIGN UP FOR ACTIVITIES ONLINE GO TO  
[MYACTIVECENTER.COM](http://MYACTIVECENTER.COM)

# May 2026



## Menu

MON	TUE	WED	THU	FRI
Menu is subject to change with out notice				1 Senior Breakfast 8-9
4 Monday Morning Social Coffee & Pastry 8 A.M	5 Taco Tuesday Shredded Beef Tacos Chips & Salsa Strawberries & Cream	6 Garlic Herb Chicken Mashed Potatoes Glazed Carrots Brownie Sundae	7 Grilled Pork Chops Roasted Potatoes Brussel Sprouts Pumpkin Bars	8 Senior Breakfast 8-9
11 Monday Morning Social Coffee & Pastry 8 A.M	12 Meat Loaf Mashed Potatoes Green Beans Roll Ice Cream	13 Lemon Pepper Chicken Rice Asparagus Coconut Cream Pie	14 Italian Sausage Rigatoni Grilled Zucchini Garlic Bread Coffee Cake	15 Senior Breakfast 8-9
18 Monday Morning Social Coffee & Pastry 8 A.M	19 Pot Roast Potatoes Carrots Roll Ice Cream	20 Salmon Rice Pilaf Veggies Mud Pie	21 Hawaiian Chicken w/ Veggies & Rice Pina Colada Fluff	22 Senior Breakfast 8-9
25 <b>Closed</b>  MEMORIAL DAY	26 Philly Cheese Steak Sliders Ice Cream	27 Fried Chicken Mashed Potatoes Corn Birthday Cake BOJH Free Lunch	28 French Onion Soup Turkey Pesto Sandwich Lemon Bundt Cake	29 Senior Breakfast 8-9

Name: \_\_\_\_\_

Date: \_\_\_\_\_

# APRIL

## Word Search Puzzle



Q C E R E E B X A M G N U X C T X R  
 G H K J L X E Z T H B C R I B D D A  
 F L H P C A O A E E P E A P U W E I  
 G I H V M T O E S O N V I F T W Z N  
 A G R O W I N G T T T F N H T E X I  
 R M C A D O M Q X U E I B D E O H K  
 D U H L D D R L I R L R O Y R O G P  
 E P I I P Z L L O G F I W W F O R V  
 N G C Q Y A H X A B F I P I L M E O  
 I L K Z B U E F A Z I W G S Y O E Q  
 N M S E L T M W S R G P L N A U N E  
 G V S P L I C M C P L A N T S S C C  
 Y A J W R I O U W P P M G W R T T M  
 B E A I K S F N C B N N G E I V Q X  
 Z D Z U S S Y A H H I G W B O B S N  
 P S G O G L B C I R Z O B W P P P W  
 B Y L G T V U A P D L A T F I F S O  
 W B E H V W I S I F R U A Z Z Q F J

### Find these words

(The words may be hidden vertically, horizontally or diagonally.)



- GREEN
- BASEBALL
- BUTTERFLY
- PLANTS
- GARDENING
- EGGS
- CHICKS
- SPRING
- RAINBOW
- TULIPS
- EASTER
- RAIN
- RABBIT
- GROWING
- FLOWERS
- BLOSSOMS




Draw your favorite April activity



# May 2026 Activities

Sign up please



SUN	MON	TUE	WED	THU	FRI	SAT
					1 Senior Breakfast 8-9	2 Kentucky Derby Party Bring a Dish or Beverage to Share 3:30
3	4 Coffee & Pastry 8 A.M	5 Exercise 10 A.M Cribbage 10:30 Blood Pressure Clinic	6 Mobile Library 11:30	7 Golden Hour W/ Proactive 9:30-10:30 Mothers Day Party 6:00	8 Senior Breakfast 8-9	9
10	11 Coffee & Pastry 8 A.M	12 Exercise 10 A.M Cribbage 10:30	13	14 Golden Hour W/ Proactive 9:30-10:30	15 Senior Breakfast 8-9	16
17	18 Coffee & Pastry 8 A.M	19 Exercise 10 A.M Cribbage 10:30 Book Club 12:30	20 Mobile Library 11:30	21 Pool Tournament 9 A.M Golden Hour W/ Proactive 9:30-10:30	22 Senior Breakfast 8-9	23
24 Solo Painting In Activities Room On Mondays	25 Closed  MEMORIAL DAY	26 Exercise 10 A.M Cribbage 10:30	27 BOJH FREE LUNCH	28 Golden Hour W/ Proactive 9:30-10:30	29 Senior Breakfast 8-9	30 Activity Requirements: 6 participants needed for in-house activities. 6 participants required for offsite events; otherwise, the activity will be canceled. Notifications will be provided if events are canceled.

# Meal Reservation Calendar

## April

Please check the dates when you will be having lunch this month, so we can have a correct count on food. Please fill this calendar out with the number of meals for the day(spouses too) and return to us ASAP! If you need to make any changes, please give us a call before 9:00 that day! Thanks for all your help! 😊

Name : \_\_\_\_\_

Sunday	Monday	Tuesday	Wednesday	Thursday	Friday	Saturday
			1	2	3	4
			Dine In- #____ Deliver-#____ Curb- #____	Dine In- #____ Deliver-#____ Curb- #____		
5	6	7	8	9	10	11
		Dine In- #____ Deliver-#____ Curb- #____	Dine In- #____ Deliver-#____ Curb- #____	Dine In- #____ Deliver-#____ Curb- #____		
12	13	14	15	16	17	18
		Dine In- #____ Deliver-#____ Curb #____	Dine In- #____ Deliver-#____ Curb- #____	Dine In-#____ Deliver-#____ Curb-#____		
19	20	21	22	23	24	25
		Dine In-#____ Deliver-#____ Curb- #____	Dine In-#____ Deliver-#____ Curb- #____	Dine In-#____ Deliver-#____ Curb- #____		
26	27	28	29	30		
		Dine In-#____ Deliver-#____ Curb- #____	BOJH FREE Dine In- #____ Deliver-#____ Curb- #____	Dine In- #____ Deliver-#____ Curb- #____		

Southwest Sublette County Pioneers

429 East First Street

Big Piney, WY 83113

NON-PROFIT

U.S. POSTAGE

PAID

BIG PINEY, WY

PERMIT # 33

OR CURRENT RESIDENT

Lunch Served:

Tuesdays, Wednesdays, & Thursdays

Salad Bar 11:30 & Lunch 12:00

Curbside at 11:00-11:15 a.m.

Home Delivered Meals

Transportation

Blood Pressure Checkups Monthly

Pool Games, Free lending Library, Exercise Equipment,

Much –Much - More!

For anyone 60 years of age and older, for more information call

276-3249